

Your smart choice for the building envelope.



Qbiss by trimo

Qbiss by trimo, defines the standard for the modern building envelope; a complete modular facade system combining all the very **highest aesthetics** together with the form and **function** demanded by today's architects and designers.

Architecturally, **Qbiss by trimo** takes **modern minimalism** to the next level; optically smooth surface and unique rounded corners delivers the greatest freedom of expression and offers designs of almost limitless possibilities – the perfect solution for all building types including hotels, banks, schools, office buildings, retail developments, leisure facilities or where a modern, **high-tech** landscape-defining construction is required.



It's aesthetic

with a unique rounded corner and famous 'shadow Joint' **Qbiss by trimo** delivers a modern minimalist design

It's self-supporting wall

No additional wall is needed. The self-supporting facade elements are fixed only at the edges on subconstruction or main construction. It means reducing of the cost as well as building time.

It's fire resistant

with integrated fire protection and supporting certification it lowers insurance premiums as well as building in health & safety benefits

It's thermally insulating

with no thermal bridges and a mineral wool core, a more stable seasonal climate can be achieved reducing heating and cooling costs

It's watertight

the system is watertight exceeding 900 Pa – significantly higher than most other systems



Qbiss by trimo offers three options:

Horizontal (classic)

The most common orientation, the individual facade elements are joined in the horizontal direction [longitudinal] with a tongue-and-groove system and fixed to structure in a vertical direction [transverse].



Horizontal (brick)

This innovative “Brick Structured Assembly” adds another design option to architects seeking to add further individuality to their projects. But **Qbiss by trimo** not only allows a symmetrical shift (end-to-middle of up and lower element), but also allows the vertical joints to be located anywhere on the longitudinal axis of the neighbouring horizontal facade elements.

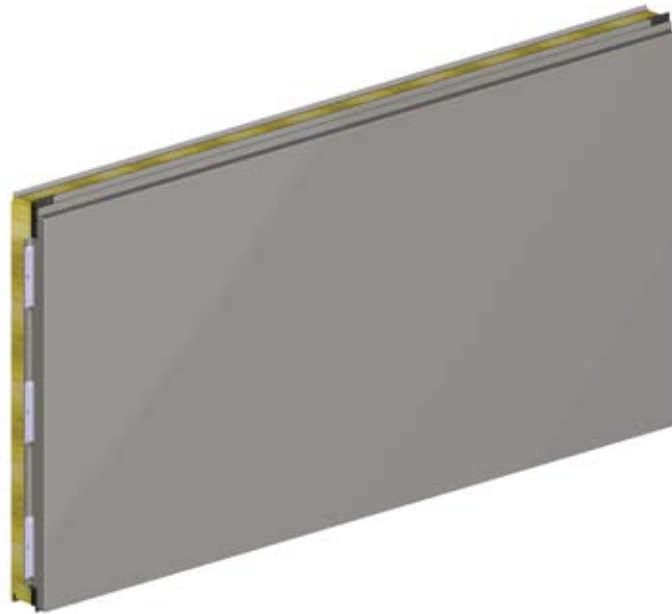


Vertical

Vertical orientation of facade elements is possible with each facade element joined in a vertical direction (transversal) with a tongue-and-groove system and fixed to the supporting structure in a horizontal direction (longitudinal).



Qbiss by trimo element consists of two galvanised and pre-finished steel sheets (internally 0.5 or 0.6 mm thick and externally 0.7 mm thick). The pre-finished steel sheets are bonded to the element core which is made of non-combustible mineral wool. All three layers make a solid element in thickness of 60 – 240 mm.



Qbiss by trimo uses Corus Colorcoat Prisma® on external side and is available in a wide range of popular solid and metallic colours. It comes with the **Corus Confidex® Guarantee for up to 25 years.**¹

¹ Colorcoat, Confidex and Prisma are registered trademarks of Corus.

Qbiss by trimo is distinguished by the unique rounded corner. This is a unique solution, enabled by the highest automated technology and patented solutions.



CHARACTERISTICS

Lenght	530 - 6500 mm
Modular width	600 - 1200 mm
Thickness	60, 80, 100, 120, 150, 200, 240 mm
External profile	G - smooth / 0.7 mm
Internal profile	s, g, v - profile / 0.6 mm or 0.5 mm
External coating	Corus Colorcoat Prisma® - 50 micron pre-finished steel
Insulant core	mineral wool - density 120 kg/m ³
Watertightness	900 Pa
Fire resistance	thickness 100 = 30 minutes thickness 120 = 60 minutes thickness 150 = 90 minutes

Qbiss by trimo – your smart choice for the building envelope with 5-in-1 advantages:

- High-end, high tech aesthetics
- Self-supporting
- Fire resistant
- Thermally insulating
- Watertight





Qbiss by trimo